

LuxSat Satellite

If you want to change servers.

The files in the Zip File allow you to switch Servers without constantly changing all software.

Remove the network cable of the decoder for update.
Guide installation:

If u have vn8000CIS go straight to step 2

- 1) Update boot-loader with special edition 1.0 (VN8000S not CIS)
- 2) Update boot-loader with 1.18_server_choose_menu
- 3) Write Data with last Factory Data (software update 1.70/2.02)
- 4) If you finish go to: menu->Options > System Information
- 5) Use the button "info" on remote control and will see: FFFF-0000-00000000000000
- 6) With the keys of direction > up down < we choose a server (33.0D.1F.20) and push OK
- 7) Reconnect the network cable and regulate the network (you become reboot)
- 8) Scan the satellites
- 9) Next step push key Fn on remote control will you see the server selected

You finished

Good luck, Madmax_2000

LuxSat Satellite

If you want to change server (by picture)

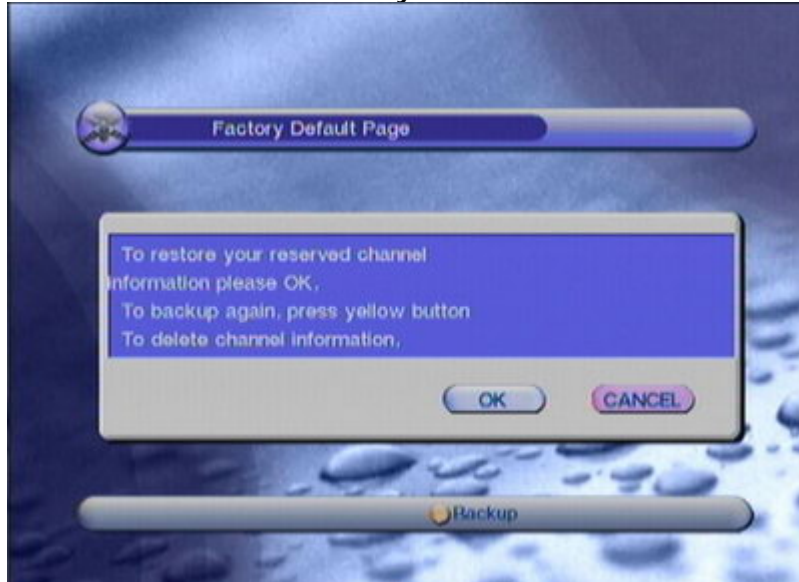
a) Menu->installations->factory default->yellow button (Backup)->ok

b) Reset factory default->ok

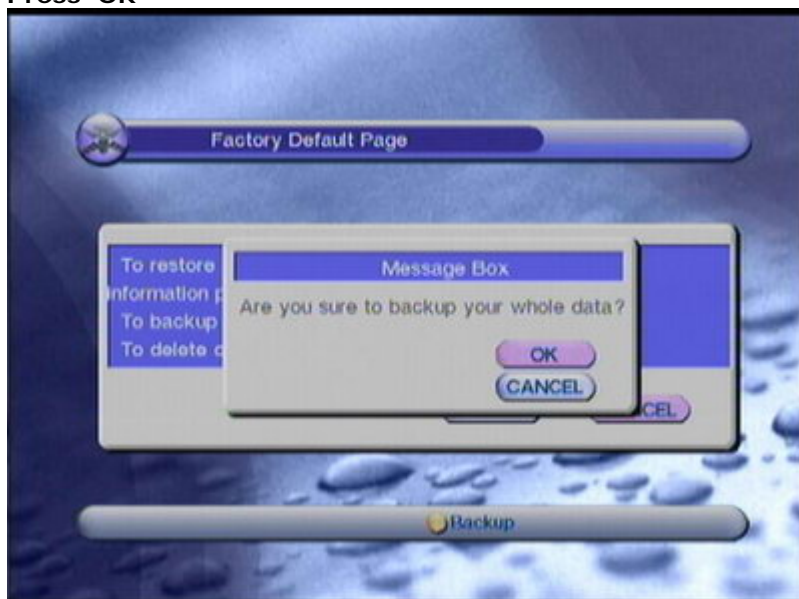
To change s3rv3r the following steps should be followed :

Menu > Installation > Factory Default

Menu > Installation > Factory Default Press Yellow button



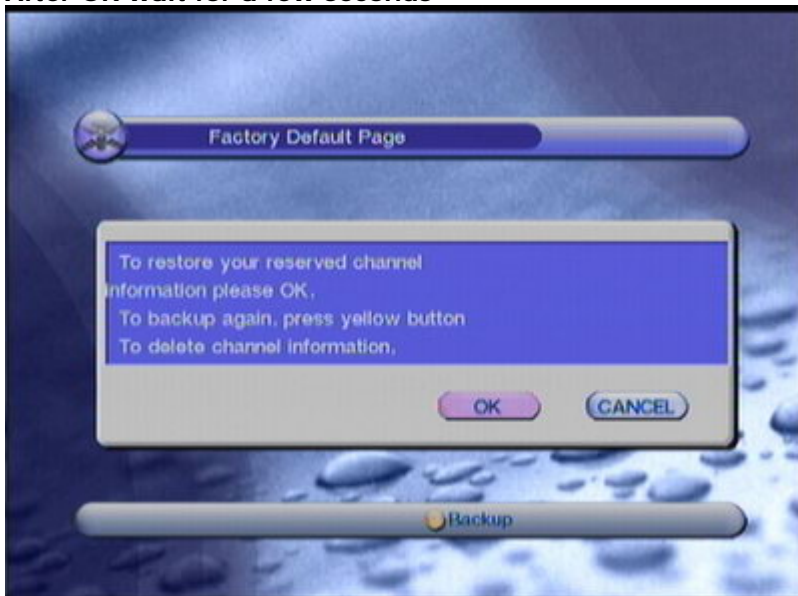
Press OK



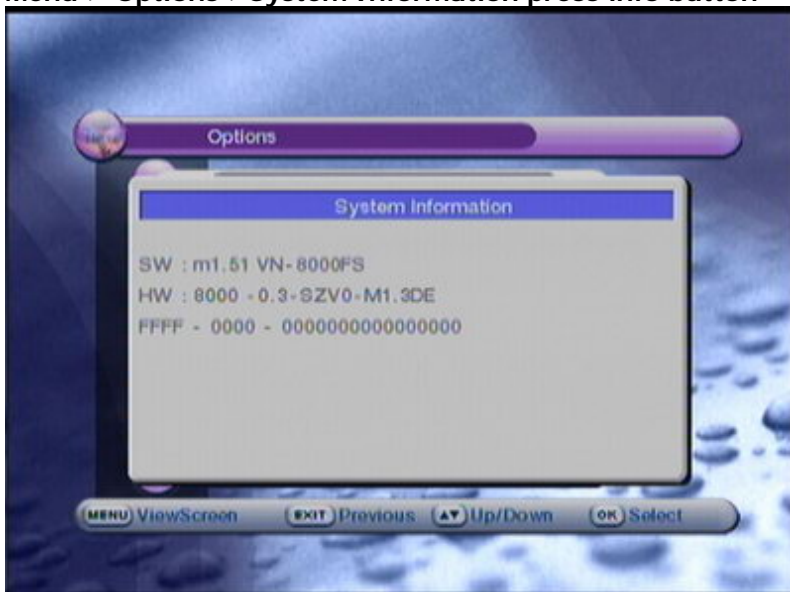
Backup completed



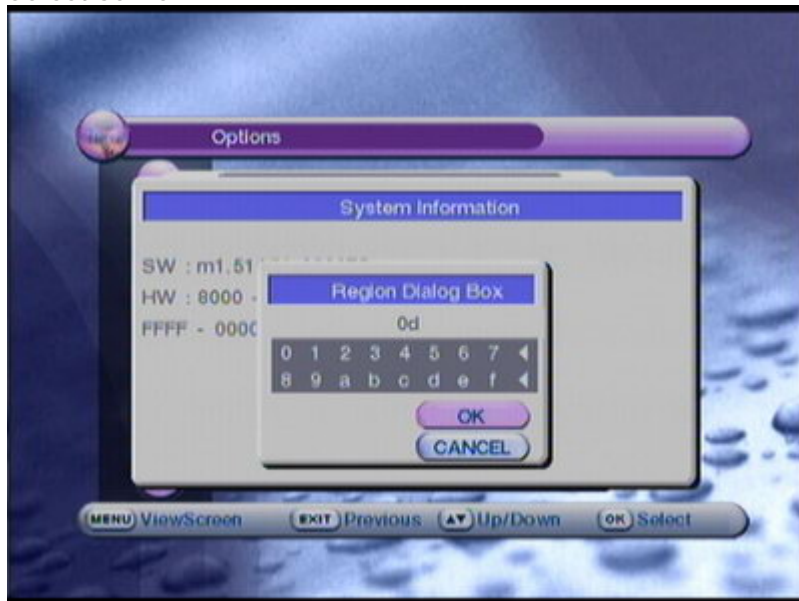
After OK wait for a few seconds



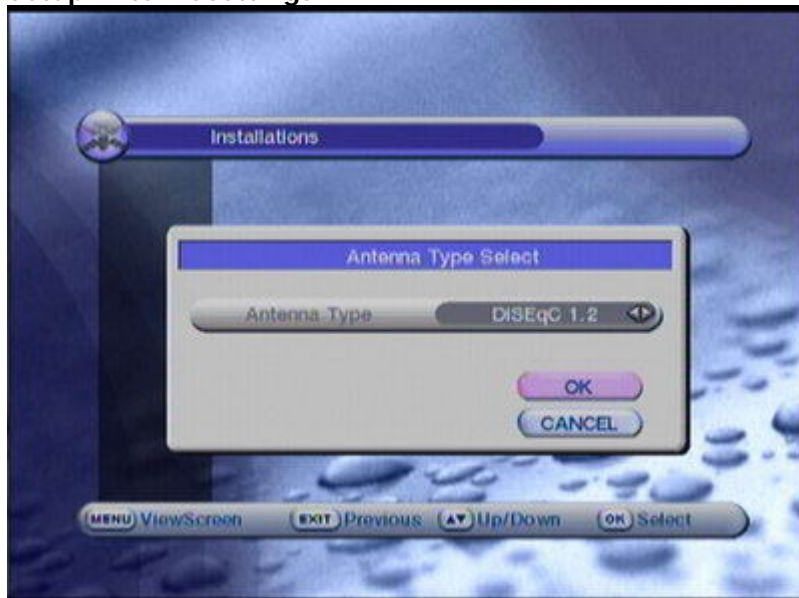
Menu > Options > System Information press info button



Select server



Setup Antennasettings



Setup Network Settings autodetect



Press the fn button and see the server



Succes,
madmax_2000
